

Linus Adapter Kit assembly guide

Version 001

Rev 01

Revision

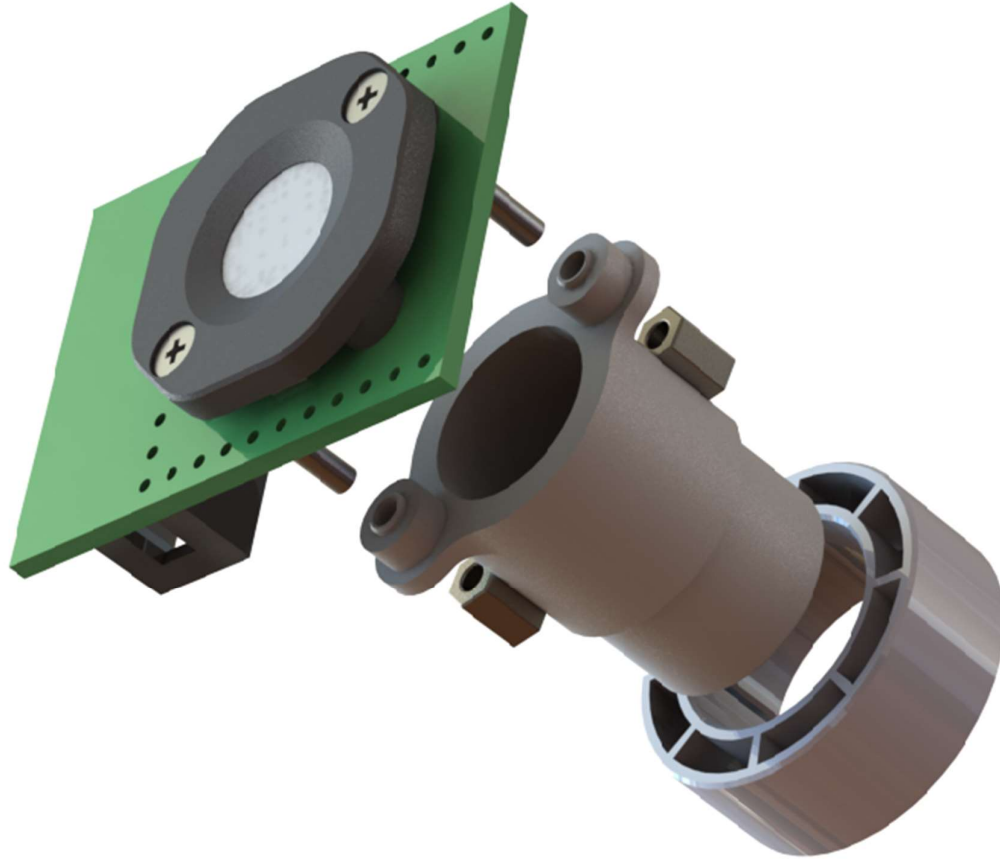
Rev.	Date	Author	Chapter	Comment
01	08/01/2019		all	

Contents

1	Assemble the Linos Adapter Kit	2
----------	---	----------

1 Assemble the Linios Adapter Kit

Use the longer screws (M2x16mm) to fit the Linios Holder on the CSS_Evalboard:



Complete assembled Linios Holder on the CSS_Evalboard:

